

Schedule 1

Item 1 Description of Agreement Area

A. External boundary description

The agreement area covers all the land and waters within the portion of Lot 3978 on PH772 (Dooyne Pastoral Holding) which falls within the external boundary of native title determination application QUD6230/98 Jangga People (QC98/10) as accepted for registration on 19 October 2004, being an area east of a line defined as:

Commencing at a point at Longitude 146.440852° East Latitude 21.838232° South, being a point on the western boundary of the QUD6230/98 Jangga People (QC98/10) Native Title Determination Application and extending generally northwest along that native title determination application boundary passing through the following coordinate points:

Longitude ° (East)	Latitude ° (South)
146.429982	21.822015
146.418546	21.802922
146.409434	21.785105
146.401231	21.766541

Notes

Data Reference and source

- Agreement boundary data compiled by National Native Title Tribunal.
- Amended native title determination application QUD6230/98 Jangga People (QC98/10) as accepted for registration on 19 October 2004.
- Cadastre data sourced from the Department of Natural Resources and Mines, Qld (March 2012).
- Rivers/Creeks where available are based on Casement data sourced from Department of Natural Resources and Mines, Qld (1 February, 2012) – *else* Topographic vector data is © Commonwealth of Australia (Geoscience Australia) 2003.
- State borders data sourced from Geoscience Australia (1998).
- Localities data is © Commonwealth of Australia (Geoscience Australia) 2001.

Reference datum

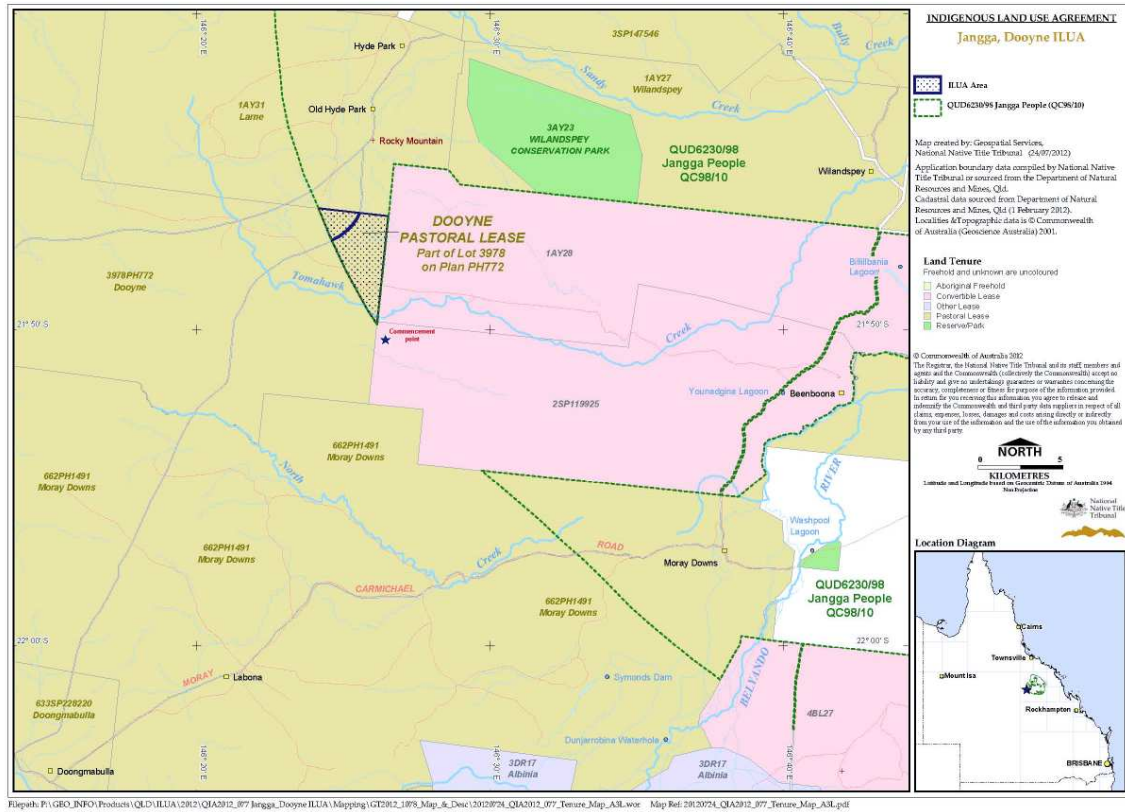
Geographical coordinates have been provided by the NNTT Geospatial Services and are referenced to the Geocentric Datum of Australia 1994 (GDA94), in decimal degrees and are based on the spatial reference data acquired from the various custodians at the time.

Use of Coordinates

Where coordinates are used within the description to represent cadastral or topographical boundaries or the intersection with such, they are intended as a guide only. As an outcome to the custodians of cadastral and topographic data continuously recalculating the geographic position of their data based on improved survey and data maintenance procedures, it is not possible to accurately define such a position other than by detailed ground survey.

Prepared by Geospatial Services, National Native Title Tribunal (24 July 2012).

B. Map



Item 3 Description of Lease

Pastoral Holding 12/3978 comprising Lot 3978 on CP PH772 commonly known as Dooyne

Item 4 Description of Lessee

Coovin Pastoral Company Pty Ltd ACN 081 899 354