

Schedule 1

Item 1 Description of Agreement Area

A. External boundary description

The agreement area includes all of the land and waters within Lot 2 on WU33 (Oak Hills Pastoral Holding) located within the Native Title Determination Application QUD85/05 Gugu Badhun People 2 (QC05/07) being an area south of the line described below:

- Commencing at the junction of the eastern bank of Back Creek and the northern bank of Lucy Creek and extending generally north easterly along the northern banks of Lucy Creek and Nobb Creek to Longitude 145.491776° East; then generally north easterly through the following coordinate points:

Longitude° (East)	Latitude° (South)
145.493155	18.531348
145.494408	18.531724
145.496037	18.532225
145.498042	18.533604
145.499421	18.534230
145.500924	18.534230
145.502929	18.533478
145.505435	18.532977
145.507190	18.533353
145.508693	18.533604
145.509321	18.534606
145.510574	18.535483
145.510950	18.536611
145.511702	18.537614
145.513831	18.538115
145.515084	18.538491
145.516338	18.539117
145.517341	18.540120
145.518093	18.541498
145.519345	18.541874
145.520347	18.541749
145.521602	18.540872
145.522353	18.540371
145.523480	18.540997
145.524232	18.541122
145.524483	18.540496
145.524232	18.539869
145.524108	18.538741
145.524483	18.537864
145.524984	18.537238

Longitude° (East)	Latitude° (South)
145.525611	18.536486
145.526488	18.535734
145.527115	18.535107
145.528744	18.534105
145.528870	18.533478
145.529873	18.533478
145.530623	18.533228
145.531626	18.532100
145.532002	18.531223
145.532378	18.530596
145.532879	18.529969
145.532378	18.529593
145.532503	18.528716
145.533631	18.528215
145.533631	18.526962
145.534258	18.525583
145.535636	18.524831
145.536889	18.523578
145.538644	18.522701
145.539772	18.522200
145.540649	18.520320
145.541777	18.519693
145.542669	18.519793

Then to a northern bank of Good Camp Creek at Longitude 18.519819° East; then generally north easterly, and generally south easterly along northern banks of Good Camp Creek and Burdekin River to Longitude 145.708573° East.

Note

Data Reference and Source

- Agreement boundary data compiled by National Native Title Tribunal.
- Rivers/Creeks where available are based on Casement data sourced from Department of Natural Resources and Mines, Qld (1 February, 2012) – else Topographic vector data is © Commonwealth of Australia (Geoscience Australia) 2003.
- Cadastral data sourced from Department of Natural Resources and Mines, Qld (1 February 2012).
- Native Title Determination Application QUD85/05 Gugu Badhun People 2 (QC05/07) as accepted for registration by 22 April 2005.

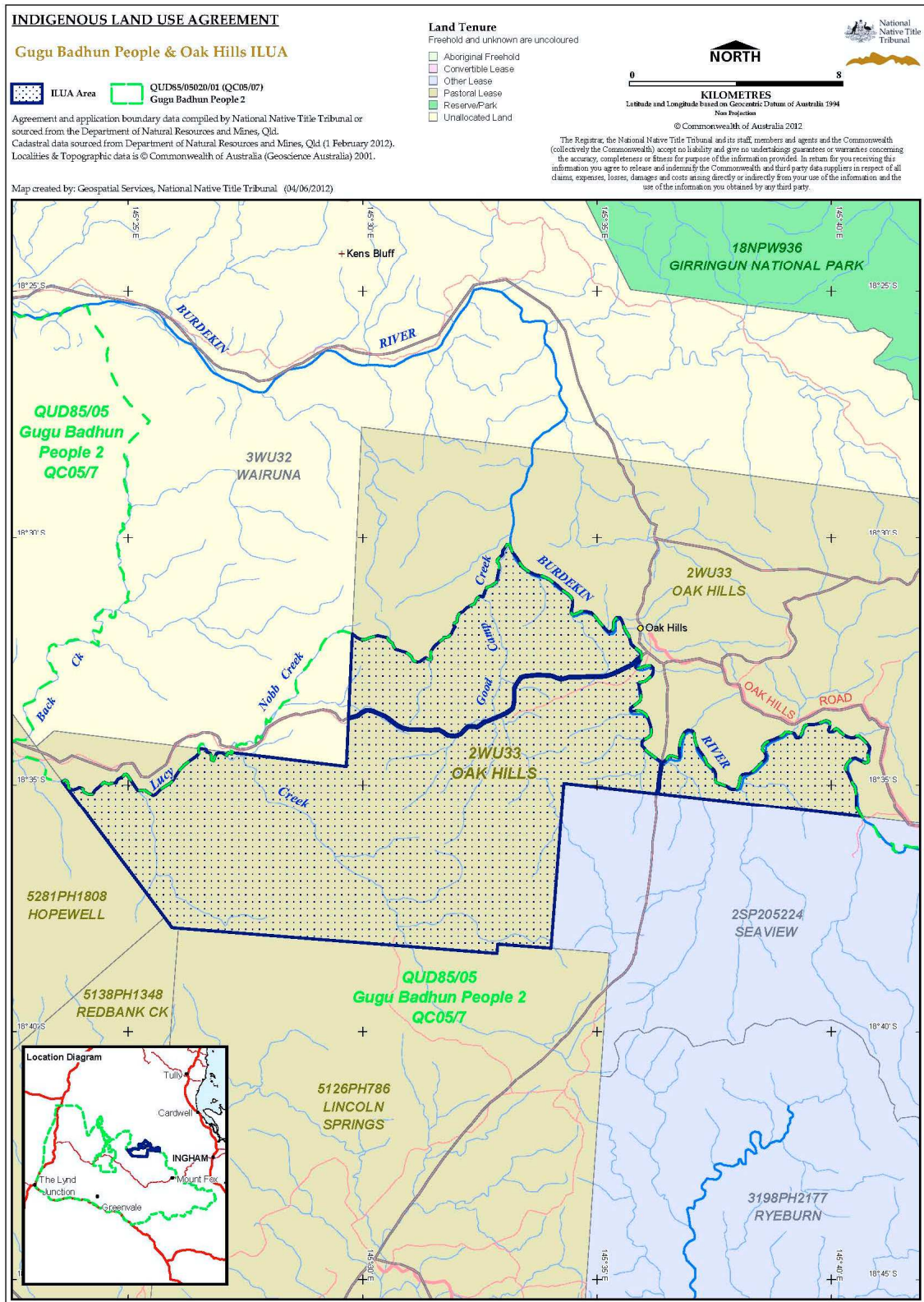
Reference Datum

Geographical coordinates have been provided by the NNTT Geospatial Services and are referenced to the Geocentric Datum of Australia 1994 (GDA94), in decimal degrees and are based on the spatial reference data acquired from the various custodians at the time.

Use of Coordinates

Where coordinates are used within the description to represent cadastral or topographical boundaries or the intersection with such, they are intended as a guide only. As an outcome to the custodians of cadastral and topographic data continuously recalculating the geographic position of their data based on improved survey and data maintenance procedures, it is not possible to accurately define such a position other than by detailed ground survey.

B. Map



Filepath:P:\GEO_INFO\Products\QLD\ILUA\2012\QIA2012_066 Gugu Badhun & Oak Hills ILUA\Mapping\GT2012_0961 Map & Desc\20120604_QIA2012_066_Tenure_A3P.wor
 Map Ref: 20120604_QIA2012_066_Tenure_A3P.pdf

Item 2 Description of Lease

Pastoral Holding 24/5318 comprising Lot 2 on CP WU33 commonly known as Oak Hills

Item 3 Description of Lessee

Wayne William Crisp and Glenda Desley Crisp of Oak Hills Station, Victoria Estate in the State of Queensland