

# Schedule 1

## Item 1 Description of Agreement Area

### A. External boundary description

The agreement area includes all of the land and waters within Lot 5203 on PH1063 (Lamonds Lagoon Pastoral Holding) located within the Native Title Determination Application QUD85/05 Gugu Badhun People 2 (QC05/07) being an area described below:

- Southwest of the northern bank of the Burdekin River; and
- That part between the centreline and eastern bank of Anthill Creek within the external boundaries of Lot 5203 on PH1063.

#### Note

##### Data Reference and Source

- Agreement boundary data compiled by National Native Title Tribunal.
- Rivers/Creeks where available are based on Casement data sourced from Department of Natural Resources and Mines, Qld (1 February, 2012) – *else* Topographic vector data is © Commonwealth of Australia (Geoscience Australia) 2003.
- Cadastral data sourced from Department of Natural Resources and Mines, Qld (1 February 2012).
- Native Title Determination Application QUD85/05 Gugu Badhun People 2 (QC05/07) as accepted for registration by 22 April 2005.

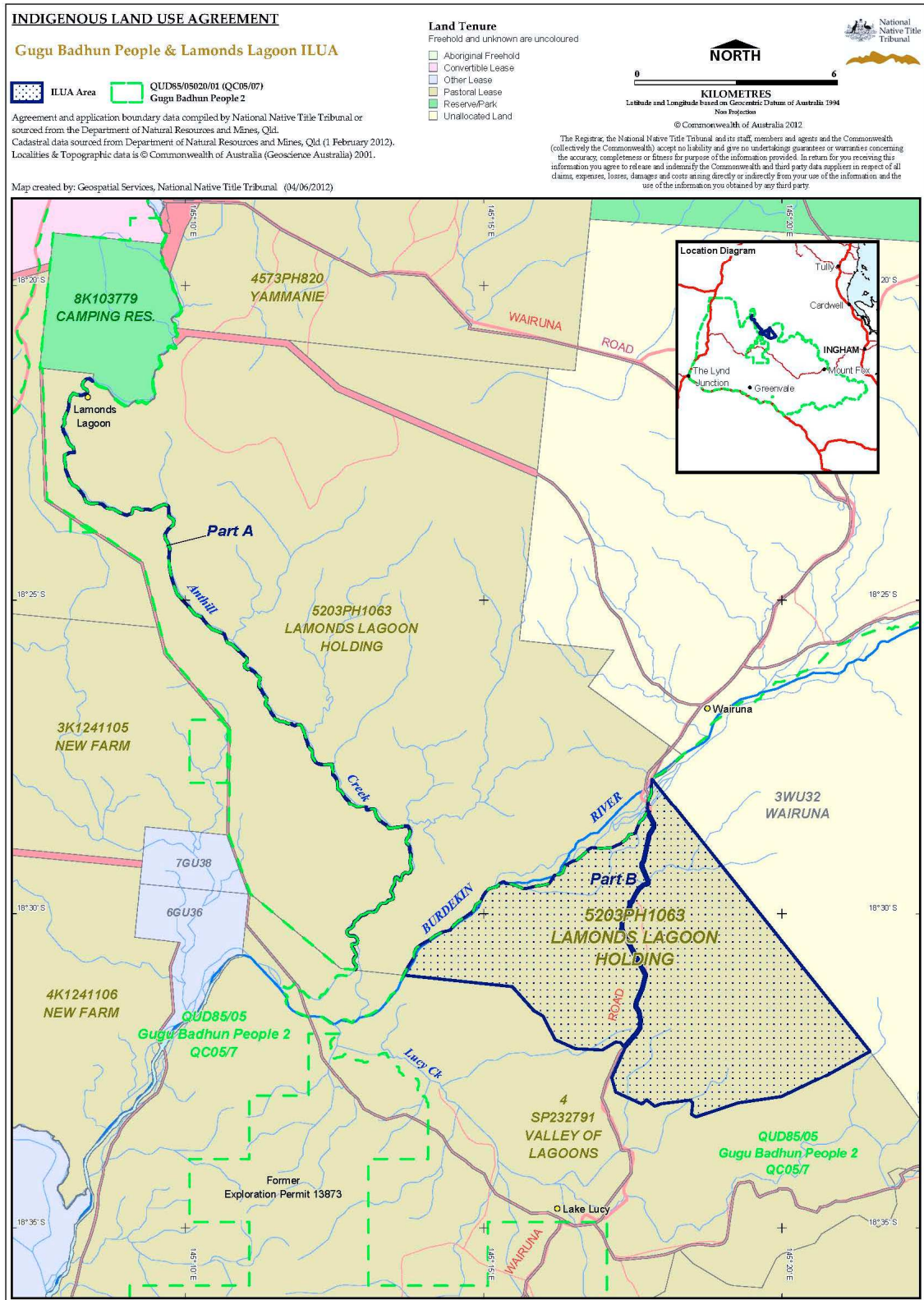
##### Reference Datum

Geographical coordinates have been provided by the NNTT Geospatial Services and are referenced to the Geocentric Datum of Australia 1994 (GDA94), in decimal degrees and are based on the spatial reference data acquired from the various custodians at the time.

##### Use of Coordinates

Where coordinates are used within the description to represent cadastral or topographical boundaries or the intersection with such, they are intended as a guide only. As an outcome to the custodians of cadastral and topographic data continuously recalculating the geographic position of their data based on improved survey and data maintenance procedures, it is not possible to accurately define such a position other than by detailed ground survey.

B. Map



Filepath: P:\GEO\_INFO\Products\QLD\ILUA\2012\QIA2012\_063 Gugu Badhun & Lamonds Lagoon ILUA (Mapping)\G12012\_0958 Map & Desc\20120604\_QIA2012\_063\_Tenure\_A3P.wor  
Map Ref: 20120604\_QIA2012\_063\_Tenure\_A3P.pdf

**Item 2 Description of Lease**

Preferential Pastoral Holding 22/5203 comprising Lot 5203 on CP PH1063 commonly known as Lamonds Lagoon

**Item 3 Description of Lessee**

Richard Stuart Burge and Rebecca Mary Burge of Lamonds Lagoon, Mount Garnet in the State of Queensland