

## Schedule 3

### Item 1 Description of Agreement Area

#### A. External boundary description

The agreement area covers all the land and waters within that part of Lot 5212 on PH1878 (Cukadoo Pastoral Holding) southwest of the line described as:

Longitude° East	Latitude° South
140.585267	21.768739
140.606406	21.793218
140.621460	21.815544
140.628345	21.848173
140.673230	21.858693
140.704098	21.886393
140.743639	21.922977

The agreement does not cover any land and waters not under claim by native title determination application QUD189/2010 - Yulluna People (QC2010/001) as accepted for registration on 16 July 2013.

#### Note

##### Data Reference and source

- Agreement boundary data compiled by National Native Title Tribunal based on data sourced from Department of Natural Resources and Mines Qld (August 2013).
- Cadastre data sourced from Department of Natural Resources and Mines Qld (August 2013).
- Rivers / Creeks based on cadastral data where possible, else 1:250k vector data © Commonwealth of Australia sourced from Geoscience Australia (2003).

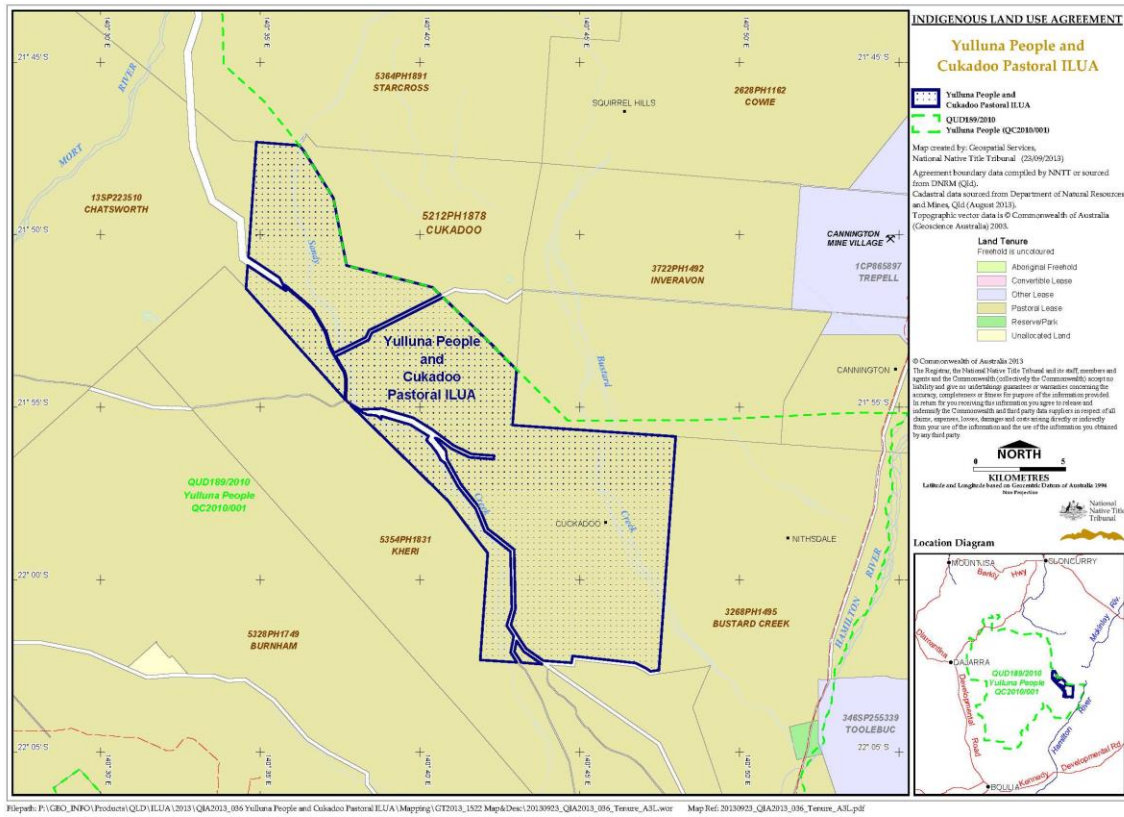
##### Reference datum

Geographical coordinates have been provided by the NNTT Geospatial Services and are referenced to the Geocentric Datum of Australia 1994 (GDA94), in decimal degrees and are based on the spatial reference data acquired from the various custodians at the time

##### Use of Coordinates

Where coordinates are used within the description to represent cadastral or topographical boundaries or the intersection with such, they are intended as a guide only. As an outcome to the custodians of cadastral and topographic data continuously recalculating the geographic position of their data based on improved survey and data maintenance procedures, it is not possible to accurately define such a position other than by detailed ground survey.

**B. Map**



**Item 2 Description of Lease**

Preferential Pastoral Holding 13/5212 comprising Lot 5212 on CP PH1878 and commonly known as Cukadoo

**Item 3 Description of Lessee**

Argylla Mountains Pastoral Pty Ltd ACN 059 843 999