

# Schedule 1

## Item 1 Description of Agreement Area

### A. External boundary description

The agreement area includes all of the land and waters within Lot 537 on SP132224 (Meadowbank (aka Kinrara)) located within the Native Title Determination Application QUD85/05 Gugu Badhun People 2 (QC05/07) being an area west of the line described below:

- Commencing at Longitude 144.935117° East, Latitude 18.207665° South and extending generally south easterly through Longitude 144.984993° East, Latitude 18.243378° South to Longitude 145.032616° East, Latitude 18.459921° South.

#### Note

##### Data Reference and Source

- Agreement boundary data compiled by National Native Title Tribunal.
- Rivers/Creeks where available are based on Casement data sourced from Department of Natural Resources and Mines, Qld (1 February, 2012) – *else* Topographic vector data is © Commonwealth of Australia (Geoscience Australia) 2003.
- Cadastral data sourced from Department of Natural Resources and Mines, Qld (1 February 2012).
- Native Title Determination Application QUD85/05 Gugu Badhun People 2 (QC05/07) as accepted for registration by 22 April 2005.
- Native Title Determination Application QUD111/04 Warrungu People 2 (QC04/8) as accepted for registration by 22 April 2005.

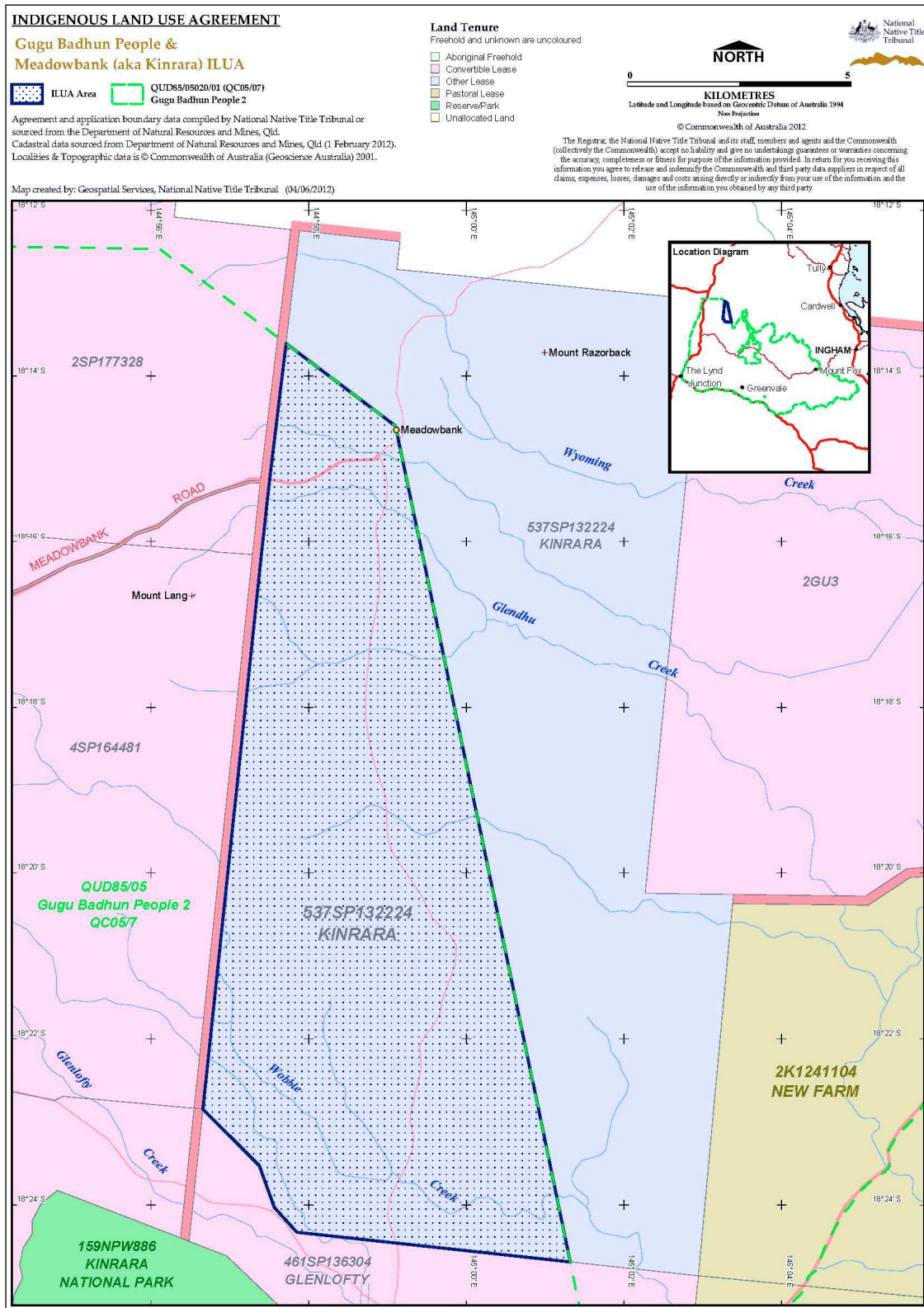
##### Reference Datum

Geographical coordinates have been provided by the NNTT Geospatial Services and are referenced to the Geocentric Datum of Australia 1994 (GDA94), in decimal degrees and are based on the spatial reference data acquired from the various custodians at the time.

##### Use of Coordinates

Where coordinates are used within the description to represent cadastral or topographical boundaries or the intersection with such, they are intended as a guide only. As an outcome to the custodians of cadastral and topographic data continuously recalculating the geographic position of their data based on improved survey and data maintenance procedures, it is not possible to accurately define such a position other than by detailed ground survey.

**B. Map**



Filepath:P:\GEO\_INFO\Products\QLD\ILUA\2012\QIA2012\_065 Gugu Badhun & Meadowbank (aka Kinrara) ILUA\Mapping\GT2012\_0960 Map & Desc\20120604\_QIA2012\_065\_Tenure\_A3P.wor  
 Map Ref: 20120604\_QIA2012\_065\_Tenure\_A3P.pdf

**Item 2 Description of Lease**

Preferential Pastoral Holding 22/537 comprising Lot 537 on SP132224 commonly known as Meadowbank (aka Kinrara)

**Item 3 Description of Lessee**

Gregory Colin Brown, Judith Margaret Brown, Glen Patrick Cameron and Laurel Jean Cameron of Meadowbank (aka Kinrara), Mount Garnet in the State of Queensland