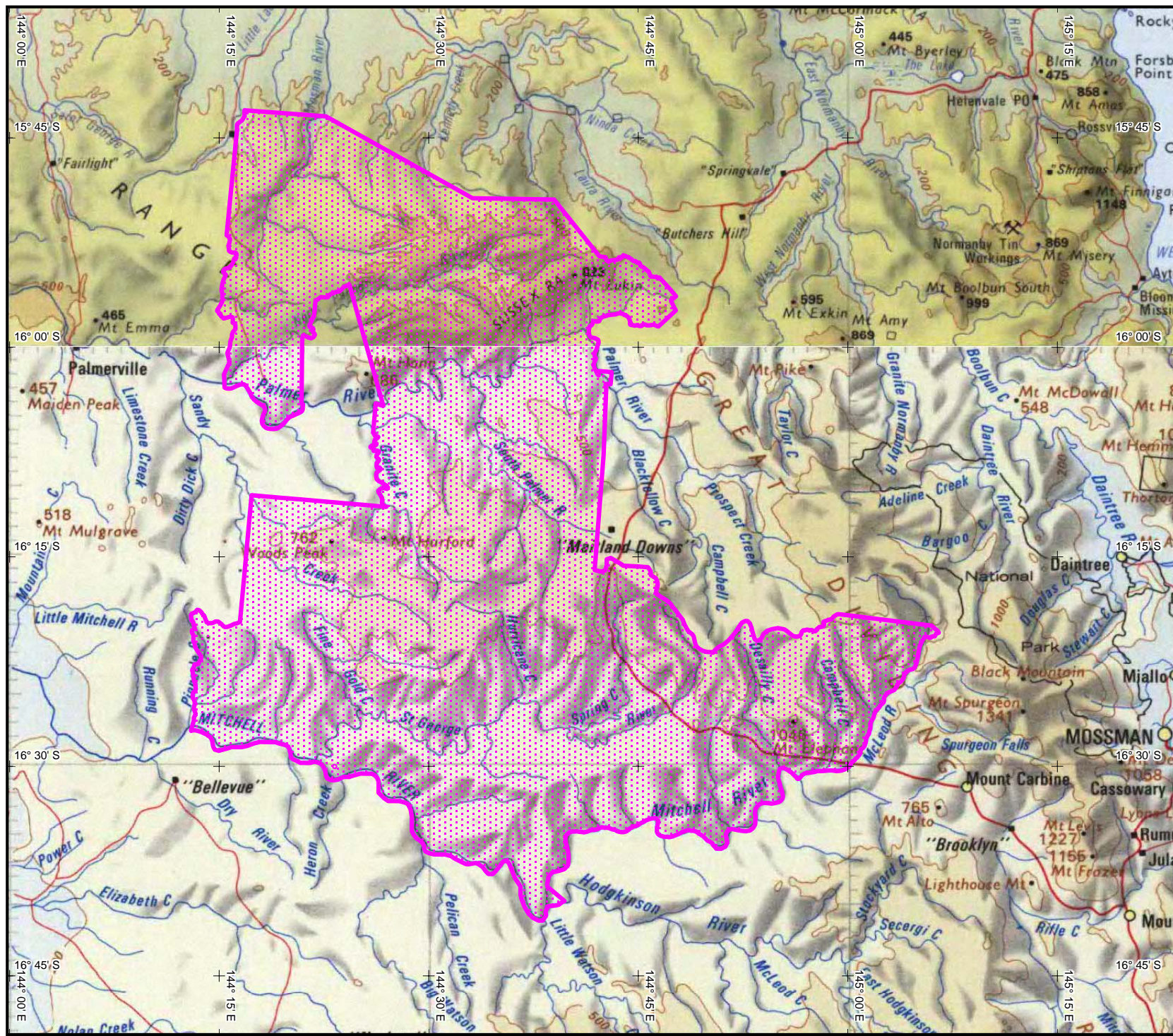


# INDIGENOUS LAND USE AGREEMENT: Small Scale Mining and Exploration Activities - Western Yalanji People ILUA (QI2005/009)



QI2005/009  
 Small Scale Mining and Exploration Activities  
 - Western Yalanji People ILUA

Extent of registered agreement as per the Register of Indigenous Land Use Agreements.

For more information, refer to the Tribunal web site [www.nntt.gov.au](http://www.nntt.gov.au)

Map created by: Geospatial Services, National Native Title Tribunal (26/07/2006).

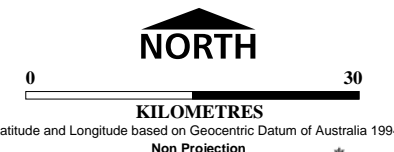
Topographic image data is © Commonwealth of Australia and is used under licence from Geoscience Australia.

NOTE: Topographic images should be used as a guide only.

Agreement boundary data compiled by NNTT based on spatial reference data supplied by various providers.

P:\GEO\_INFO\Products\QLD\VLUA\2005\QI2005\_009 Small Scale Mining and Exploration Activities - Western Yalanji People ILUA\Mapping\2006\_1162\_A4L\QI2005\_009\_A4L.wor

The Registrar, the National Native Title Tribunal and its staff and officers and the Commonwealth, accept no liability and give no undertakings, guarantees or warranties concerning the accuracy, completeness or fitness for purpose of the information provided.



Location Diagram

