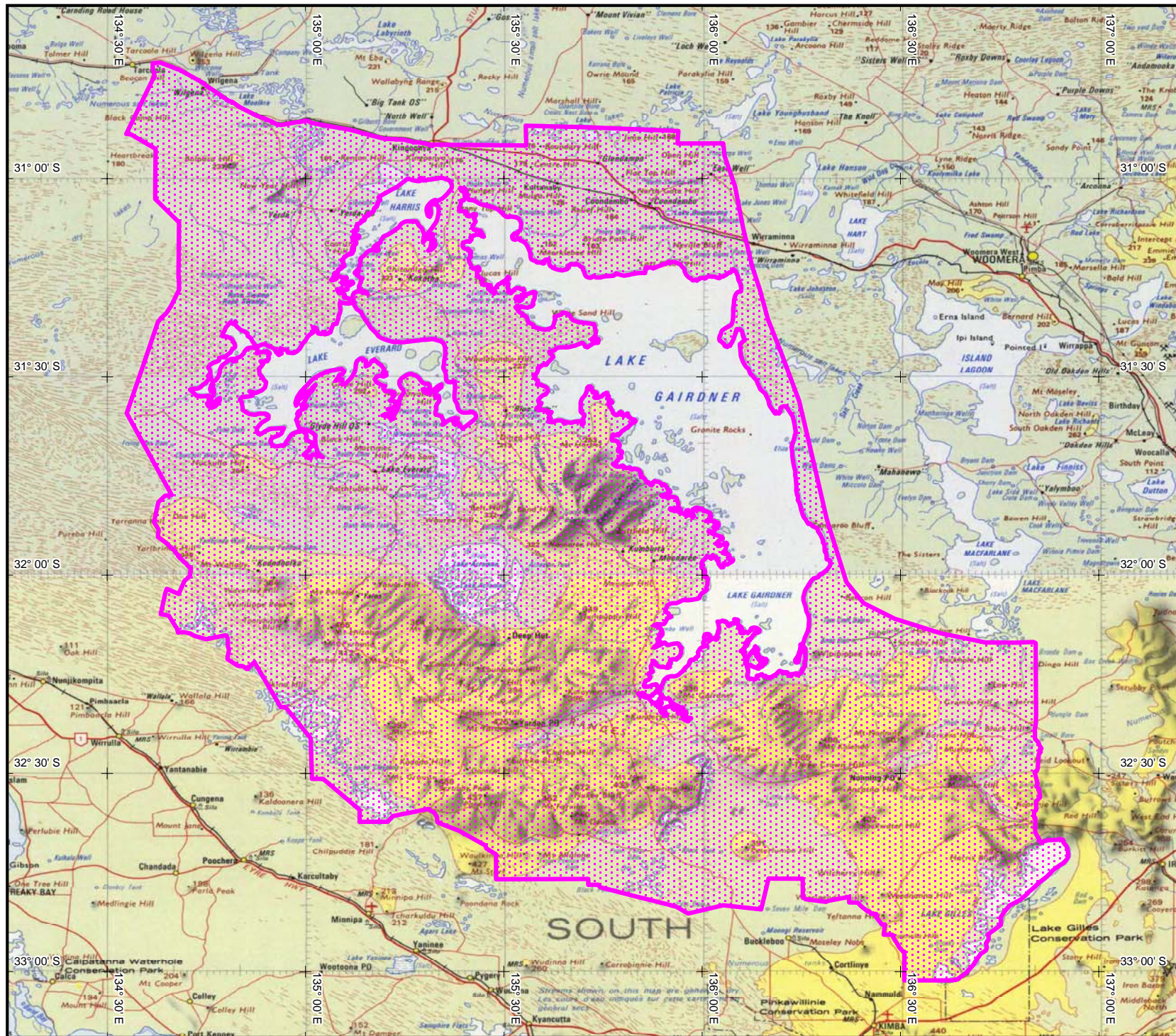


INDIGENOUS LAND USE AGREEMENT: Gawler Ranges Mineral Exploration ILUA (SI2004/004)



SI2004/004
Gawler Ranges Mineral Exploration ILUA
 Extent of registered agreement as per the Register of Indigenous Land Use Agreements.

For more information, refer to the Tribunal web site www.nntt.gov.au

Map created by: Geospatial Services, National Native Title Tribunal (26/07/2006).

Topographic image data is © Commonwealth of Australia and is used under licence from Geoscience Australia.

NOTE: Topographic images should be used as a guide only.

Agreement boundary data compiled by NNTT based on spatial reference data supplied by various providers.

P:\GEO_INFO\Products\SA\ILUA\2004\SI2004_004 Gawler Ranges Mineral Exploration ILUA Mapping\2006_1391_A4L\SI2004_004_A4L.wor

The Registrar, the National Native Title Tribunal and its staff and officers and the Commonwealth, accept no liability and give no undertakings, guarantees or warranties concerning the accuracy, completeness or fitness for purpose of the information provided.



0 70

KILOMETRES

Latitude and Longitude based on Geocentric Datum of Australia 1994
 Non Projection



NATIONAL NATIVE TITLE TRIBUNAL

Location Diagram

