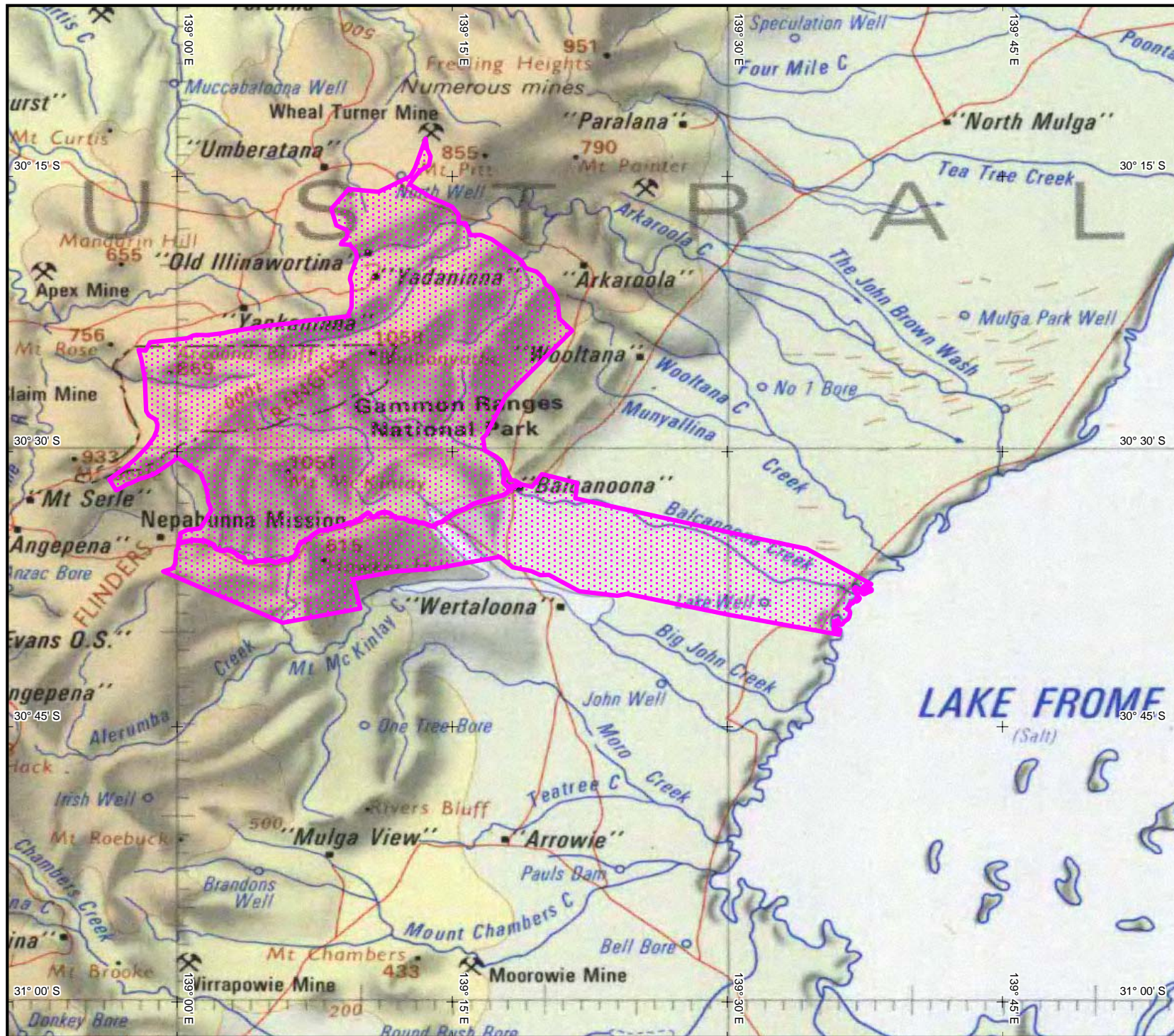


**INDIGENOUS LAND USE AGREEMENT: Vulkathunha-Gammon Ranges National Park ILUA (SI2005/006)**



SI2005/006  
■ Vulkathunha-Gammon Ranges National Park ILUA

Extent of registered agreement as per the Register of Indigenous Land Use Agreements.

For more information, refer to the Tribunal web site [www.nntt.gov.au](http://www.nntt.gov.au)

Map created by: Geospatial Services, National Native Title Tribunal (26/07/2006).

Topographic image data is © Commonwealth of Australia and is used under licence from Geoscience Australia.

NOTE: Topographic images should be used as a guide only.

Agreement boundary data compiled by NNTT based on spatial reference data supplied by various providers.

P:\GEO\_INFO\Products\SA\ILUA\20051  
 SI2005\_006 Vulkathunha-Gammon Ranges ILUA  
 Mapping\2006\_1391\_A4L\SI2005\_006\_A4L.wor

The Registrar, the National Native Title Tribunal and its staff and officers and the Commonwealth, accept no liability and give no undertakings, guarantees or warranties concerning the accuracy, completeness or fitness for purpose of the information provided.



**KILOMETRES**  
 Latitude and Longitude based on Geocentric Datum of Australia 1994  
 Non Projection



NATIONAL NATIVE TITLE TRIBUNAL

**Location Diagram**

