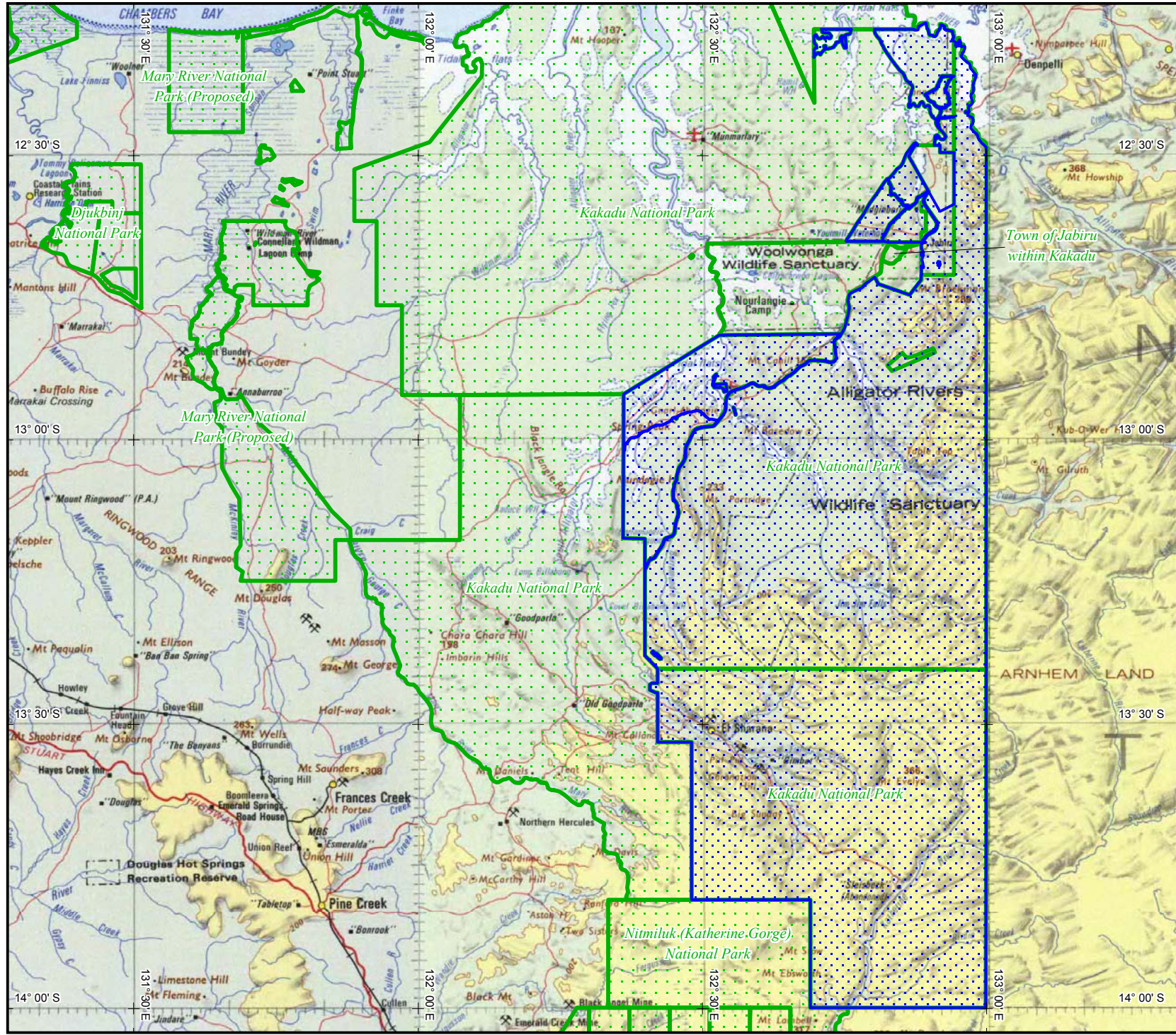


Agreements, Treaties & Negotiated Settlements: Kakadu National Park, The Northern Territory of Australia, Memorandum of Lease (1978)





For more information, refer to the Agreements, Treaties & Negotiated Settlements web site www.atns.net.au

Map created by: Geospatial Services, National Native Title Tribunal (22/10/2004)
 Topographic image data is © Commonwealth of Australia and is used under licence from Geoscience Australia
 NOTE: Topographic images should be used as a guide only.

Agreement boundary data compiled by NNTT based on spatial reference data supplied by DIPE, NT (2004).

Conservation Area data sourced from DIPE, NT (2004).

P:\GEO_INFO\System\Melbourne Uni - Agreements Database\ATNS\Workspaces\A000001.WOR

-  Kakadu National Park Memorandum of Lease Area (geographic extent) = 8,552.700 sq km
-  Conservation Area

The Registrar, the National Native Title Tribunal and its staff and officers and the Commonwealth, accept no liability and give no undertakings, guarantees or warranties concerning the accuracy, completeness or fitness for purpose of the information provided.



Latitude and Longitude based on Geocentric Datum of Australia 1994
 Non Projection



Location Diagram

