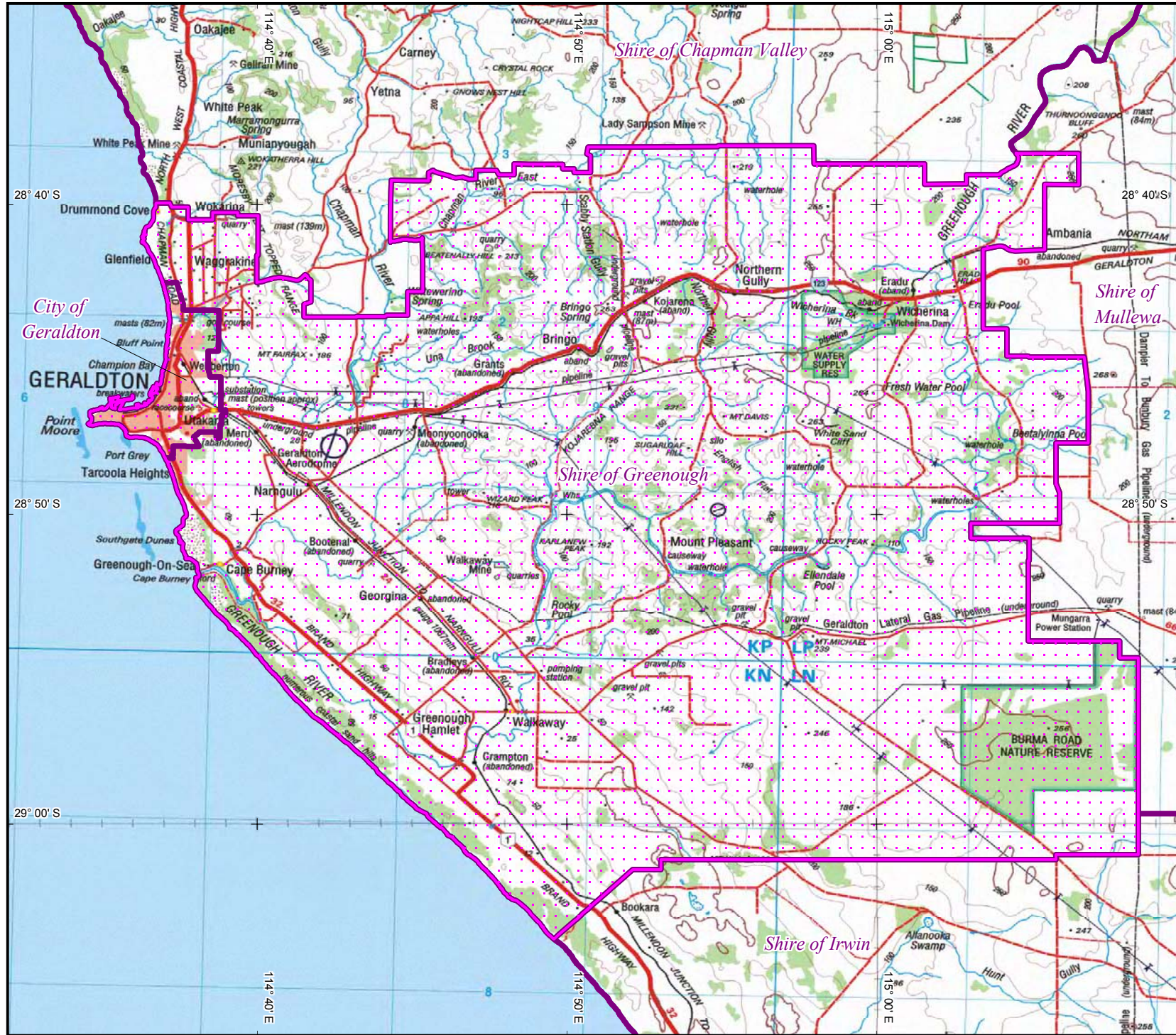


Agreements, Treaties & Negotiated Settlements: Geraldton-Greenough Memorandum of Understanding (2003)





For more information, refer to the Agreements, Treaties & Negotiated Settlements web site www.atns.net.au

Map created by: Geospatial Services, National Native Title Tribunal (25/10/2004)
 Topographic image data is © Commonwealth of Australia and is used under licence from Geoscience Australia
 NOTE: Topographic images should be used as a guide only.

Agreement boundary data compiled by NNTT based on spatial reference data supplied by DLI, WA (2003).

LGA data sourced from DLI, WA (2003).
 P:\GEO_INFO\System\Melbourne Uni - Agreements Database\ATNS\Workspaces\A001530.WOR

-  Geraldton-Greenough Memorandum (geographic extent) = 1,783.848 sq km
-  Local Government Area

The Registrar, the National Native Title Tribunal and its staff and officers and the Commonwealth, accept no liability and give no undertakings, guarantees or warranties concerning the accuracy, completeness or fitness for purpose of the information provided.



Latitude and Longitude based on Geocentric Datum of Australia 1994
 Non Projection

