

## **Kullilli People and Talgeberry ILUA**

### **Description**

The agreement area covers all the land and waters within that part of Lot 5159 on PH1835 (Talgeberry Pastoral Holding) located within the Native Title Determination Application QUD80/2009 Kullilli People (QC2009/001), further described as that part of that lot southeast of the watershed between Coopers Creek and Bulloo River drainage sub-basins.

### **Note**

#### **Data Reference and source**

- Agreement boundary data compiled by National Native Title Tribunal based on data sourced from Department of Natural Resources and Mines Qld (July 2013).
- Native Title Determination Application QUD80/2009 Kullilli People (QC2009/001) as per the amended application filed in the Federal Court on 16 May 2014.
- Cadastre data sourced from Department of Natural Resources and Mines Qld (February 2014).
- Drainage basin sub-area data depicts a subdivision of the major drainage basins (catchment) in Queensland, Dataset sourced from supplied by Department of Natural Resources and Mines, Qld (20 Feb 2009).

#### **Reference datum**

Geographical coordinates have been provided by the NNTT Geospatial Services and are referenced to the Geocentric Datum of Australia 1994 (GDA94), in decimal degrees and are based on the spatial reference data acquired from the various custodians at the time.

#### **Use of Coordinates**






Where coordinates are used within the description to represent cadastral or topographical boundaries or the intersection with such, they are intended as a guide only. As an outcome to the custodians of cadastral and topographic data continuously recalculating the geographic position of their data based on improved survey and data maintenance procedures, it is not possible to accurately define such a position other than by detailed ground survey.

Prepared by Geospatial Services, National Native Title Tribunal (9 July 2014)

# Kullilli People and Talgeberry ILUA

 Kullilli People and Talgeberry ILUA

Map created by: Geospatial Services, National Native Title Tribunal (09/07/2014)  
 Agreement boundary data compiled by NNTT.  
 Cadastral data sourced from Department of Natural Resources and Mines, Qld (February 2014).  
 Topographic vector data is © Commonwealth of Australia (Geoscience Australia) 2003.

- Land Tenure**
- Freehold is uncoloured
  -  Aboriginal Freehold
  -  Convertible Lease
  -  Other Lease
  -  Pastoral Lease
  -  Reserve/Park
  -  Unallocated Land

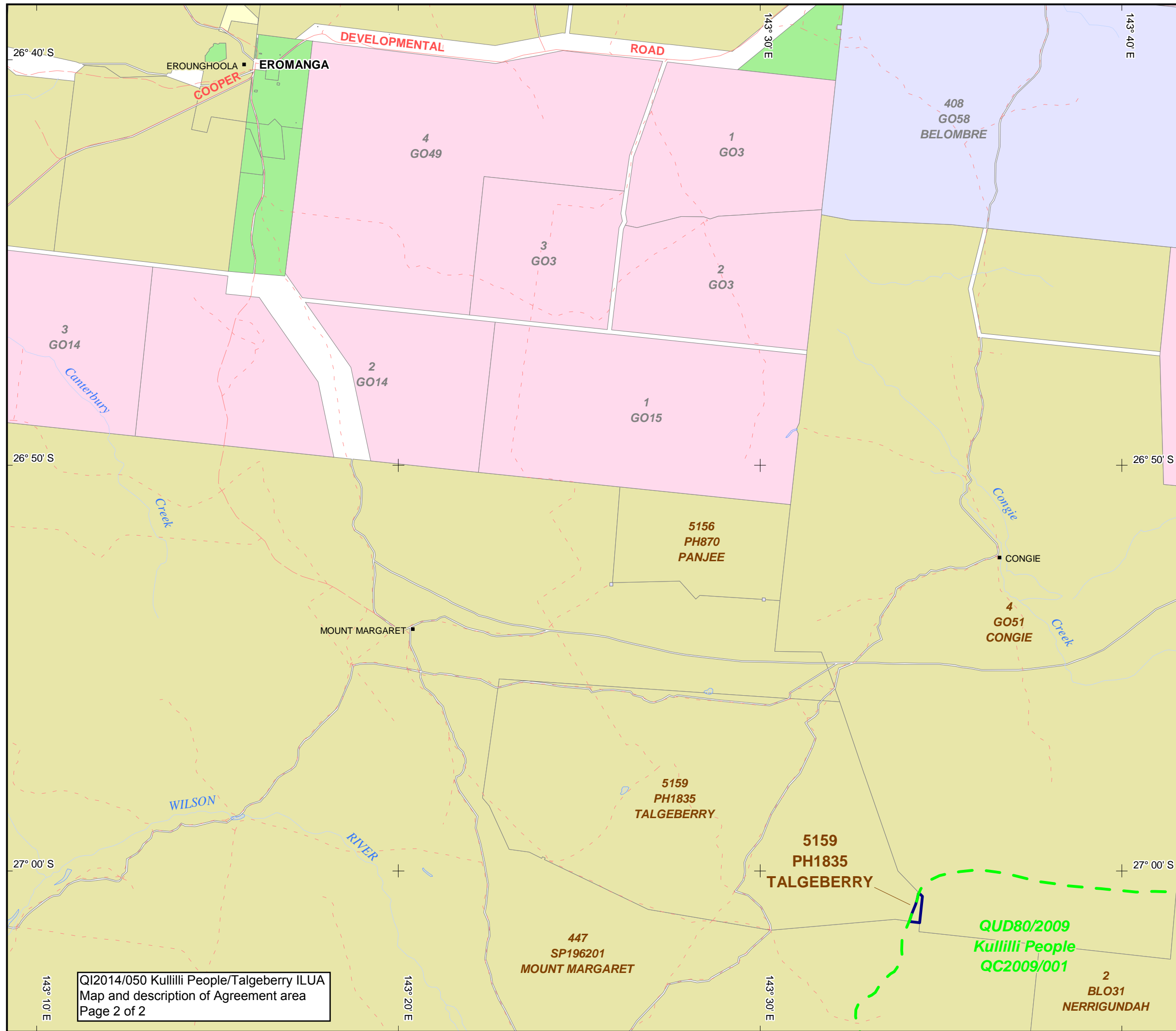
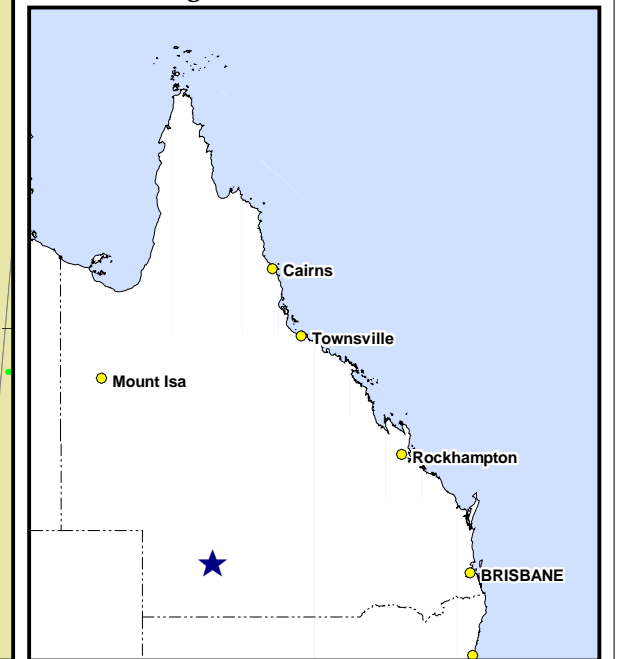
© Commonwealth of Australia 2014  
 The Registrar, the National Native Title Tribunal and its staff, members and agents and the Commonwealth (collectively the Commonwealth) accept no liability and give no undertakings, guarantees or warranties concerning the accuracy, completeness or fitness for purpose of the information provided. In return for you receiving this information you agree to release and indemnify the Commonwealth and third party data suppliers in respect of all claims, expenses, losses, damages and costs arising directly or indirectly from your use of the information and the use of the information you obtained by any third party.



Latitude and Longitude based on Geocentric Datum of Australia 1994  
 Non Projection



**Location Diagram**



Q12014/050 Kullilli People/Talgeberry ILUA  
 Map and description of Agreement area  
 Page 2 of 2