

## Schedule 1

### Item 1 Description of Agreement Area

#### A. External boundary description

The agreement area covers all the land and waters within Lot 2599 on PH20 (Bellera Pastoral Holding), Lot 2554 on PH458 (Molesworth Pastoral Holding) and that part of Lot 1673 on PH2276 (Bulloo Downs Pastoral Holding) located within the Native Title Determination Application QUD80/2009 Kullilli People (QC2009/001), further described as that part of those lots west of the line described by the following coordinate points:

Longitude (East)	Latitude (South)
143.742306	28.542370
143.741227	28.538933
143.740461	28.534001
143.738717	28.529133
143.735025	28.524795
143.731928	28.521314
143.728439	28.517664
143.724758	28.514474
143.721406	28.511511
143.719619	28.508711
143.719328	28.505785
143.719367	28.503201
143.720049	28.499752
143.719566	28.497172
143.719473	28.494359
143.720100	28.491944
143.721571	28.489293
143.723622	28.486007
143.725483	28.483296
143.728186	28.480062
143.730376	28.477579

#### Note

##### Data Reference and source

- Agreement boundary data compiled by National Native Title Tribunal based on data sourced from Department of Natural Resources and Mines Qld (August 2013).
- Cadastre data sourced from Department of Natural Resources and Mines Qld (August 2013).

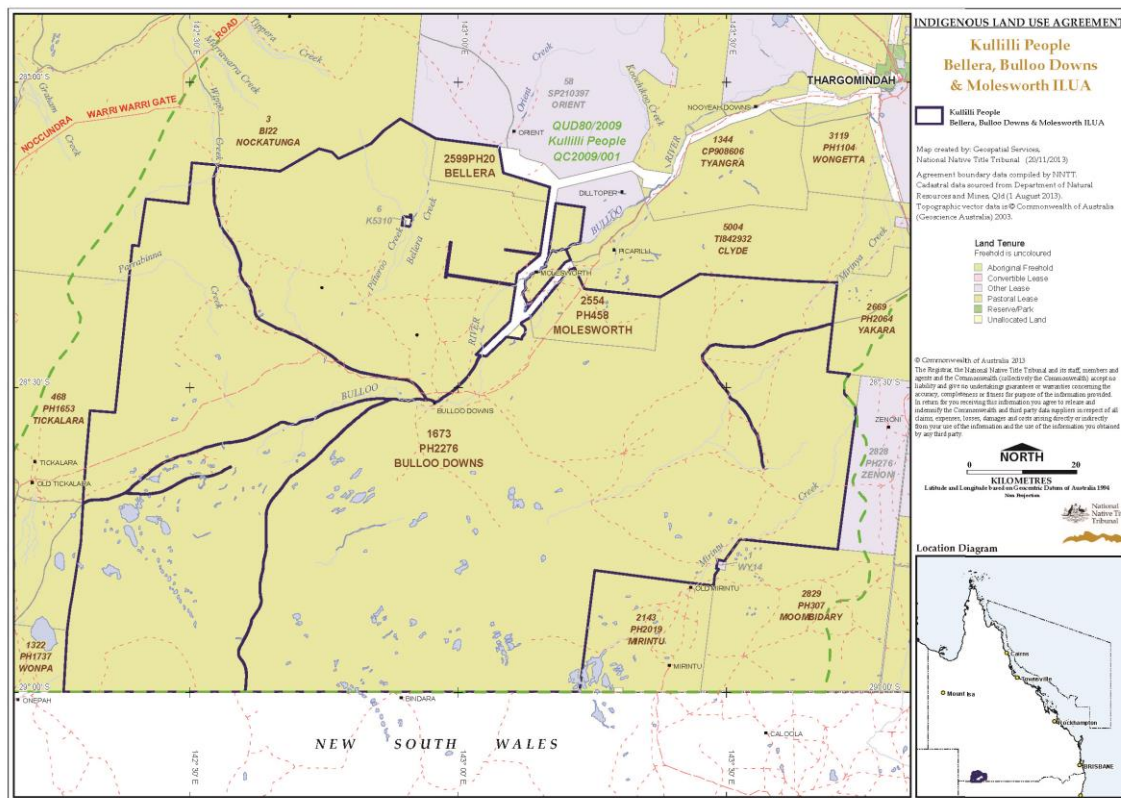
##### Reference datum

Geographical coordinates have been provided by the NNTT Geospatial Services and are referenced to the Geocentric Datum of Australia 1994 (GDA94), in decimal degrees and are based on the spatial reference data acquired from the various custodians at the time.

### Use of Coordinates

Where coordinates are used within the description to represent cadastral or topographical boundaries or the intersection with such, they are intended as a guide only. As an outcome to the custodians of cadastral and topographic data continuously recalculating the geographic position of their data based on improved survey and data maintenance procedures, it is not possible to accurately define such a position other than by detailed ground survey.

### B. Map



### Item 2 Description of Leases

Pastoral Holding 15/2599 comprising Lot 2599 on PH20

Pastoral Holding 15/1673 comprising Lot 1673 on PH2276

Pastoral Holding 15/2554 comprising Lot 2554 on PH458

### Item 3 Description of Lessee

Gibson Grazing Pty Ltd ACN 109 133 119