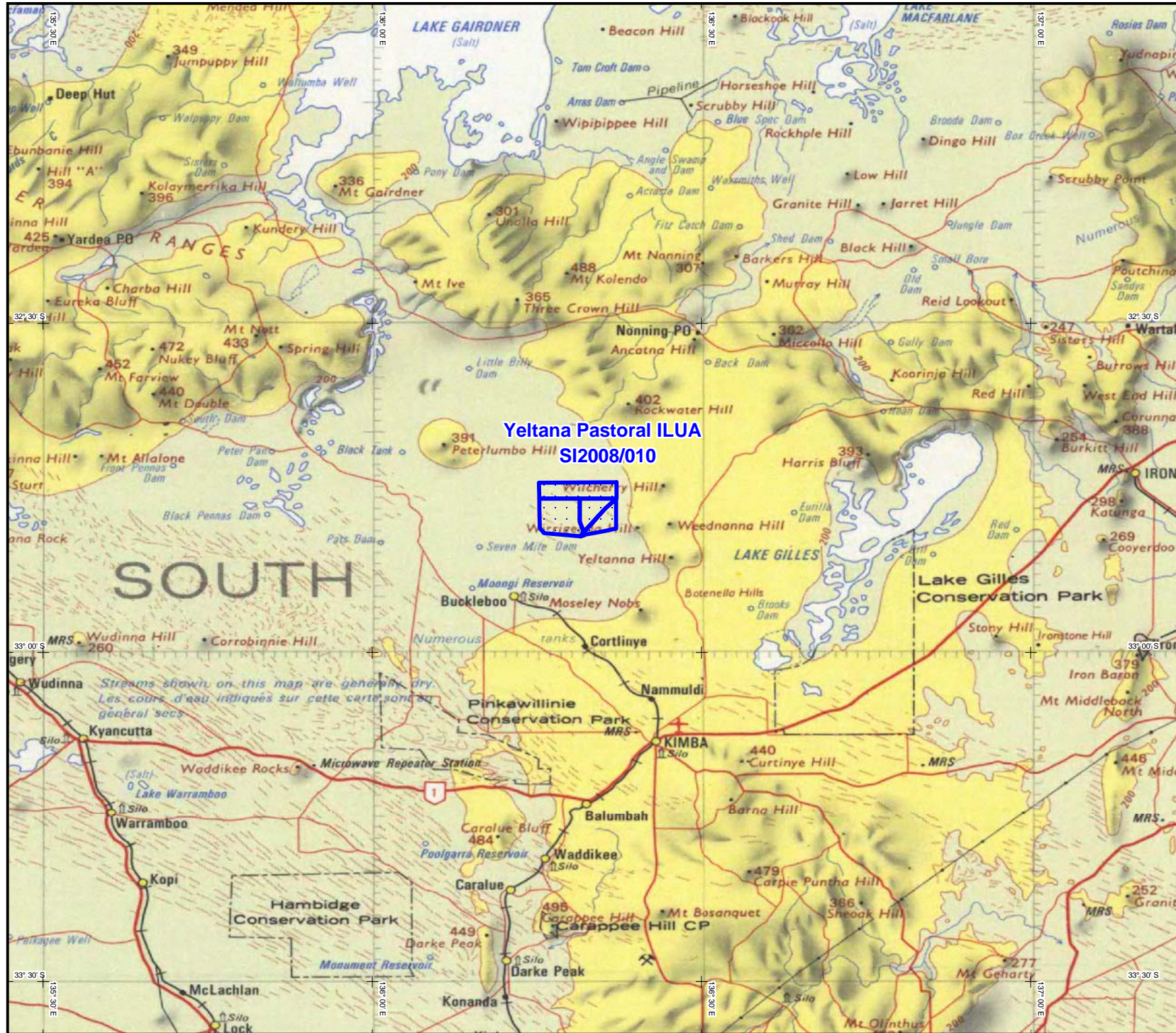



INDIGENOUS LAND USE AGREEMENT: Yeltana Pastoral ILUA SI2008/010



 SI2008/010
Yeltana Pastoral ILUA

Extent of registered agreement as per the Register of Indigenous Land Use Agreements.

For more information, refer to the Tribunal web site www.nntt.gov.au

Map created by: Geospatial Services, National Native Title Tribunal (24/12/2009).

Topographic image data is © Commonwealth of Australia and is used under licence from Geoscience Australia.

NOTE: Topographic images should be used as a guide only.

Agreement boundary data compiled by NNTT.

Map Ref: 20091224_SI2008_010_Web map.pdf
Filepath: P:\GEO_INFO\Products\SA\ILUA\2008\SI2008_010_Yeltana_ILUAMapping\GT2009_2518_Web map\20091224_SI2008_010_Web map.wor
Geotrack: GT2009/2518

The Registrar, the National Native Title Tribunal and its staff, members and agents and the Commonwealth (collectively the Commonwealth) accept no liability and give no undertakings, guarantees or warranties concerning the accuracy, completeness or fitness for purpose of the information provided. In return for being allowed to access this information you agree to release and indemnify the Commonwealth and third party data suppliers in respect of all claims, expenses, losses, damages and costs arising directly or indirectly from your use of the information and the use of the information you obtained by any third party.



Latitude and Longitude based on Geocentric Datum of Australia 1994
Non Projection



Location Diagram

